



Essex County

VERMONT KIDS COUNT

2007

total population	6,495
children under 18	1,297
median income	\$35,986
children living in poverty ²	267
% children living in poverty ²	21%

More than 1 in 5 children in Essex County live in poverty.

Economic Security

	2000			2007 ¹			% change in County rates, 2000 - most recent	County rate compared to state rate
	County total	County rate	State rate	County total	Current rate	State rate		
Food Stamps	338	20.4	12.6	300	22.2	14.6	8.9%	52.0% higher
Dr. Dynasaur/Medicaid ³	888	53.6	35.7	849	62.7	43.4	17.0%	44.5% higher
TANF (Reach-up) ⁴	168	10.1	7.6	106	7.8	6.0	-22.9%	30.1% higher
School Meals ⁵	436	48.9	26.7	363	46.9	29.9	-4.1%	56.8% higher
New Families at Risk ⁶	3	12.0	8.4	1	3.8	6.2	-68.1%	38.0% lower

ECONOMIC SECURITY

AtAt \$35,986, the Essex's 2007 county median household income was the lowest in the state—28% lower than the state median of \$49,698. The Northeast Kingdom counties have the three lowest median household incomes.

Nearly 47%—over 4 out of 9—of public school students were approved for School Meals Programs, compared to 29.9% statewide.

More than 1 child in 5 received Food Stamp benefits, compared to 1 in 7 statewide.

Rates of Food Stamp enrollment have increased since 2000—which may be related to increased child poverty as well as improved outreach.

A majority of children, 62.7%—more than 3 out of five—were enrolled in Dr. Dynasaur/Medicaid, compared to the state average of 43.4%.

With the exception of poverty and median income estimates, all rates and counts are based on three-year averages. For example, the year 2007 represents the average of 2005-2007.

¹ 2007 data except School Meals (2008) and New Families at Risk (2006).

² Since the estimates are not based on direct counts, county data should not be compared. Smaller population areas have wider confidence intervals and should be used with caution. For more details and cautions, see: <http://www.census.gov/cgi-bin/saige/saige.cgi>. The 2007 Federal Poverty Threshold was \$20,650 for a family with two adults and two children.

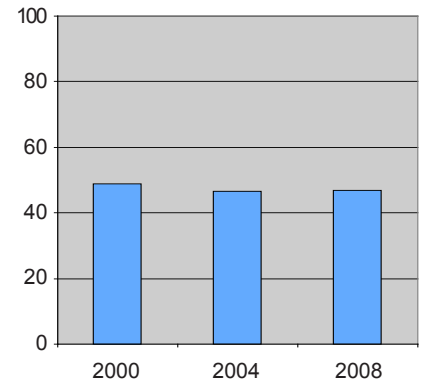
³ Dr. Dynasaur, Vermont's public health insurance program for children and pregnant women.

⁴ The Reach-Up Program is Vermont's version of TANF, the federal Temporary Aid to Needy Families Program.

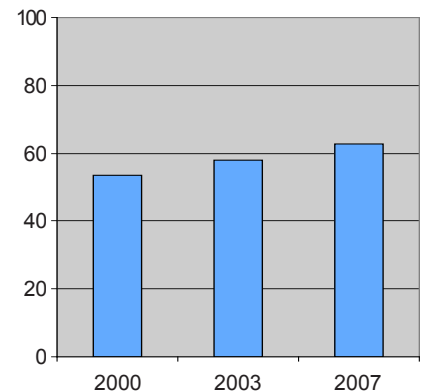
⁵ Public school students approved for free and reduced-price Federal School Meals.

⁶ Percentage of first births to unmarried women under 20 with less than 12 years of education.

Percent of Students Approved for Federal School Meals

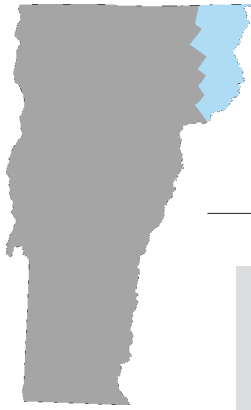


Percent of Children Enrolled in Dr. Dynasaur/Medicaid



Voices
for Vermont's Children





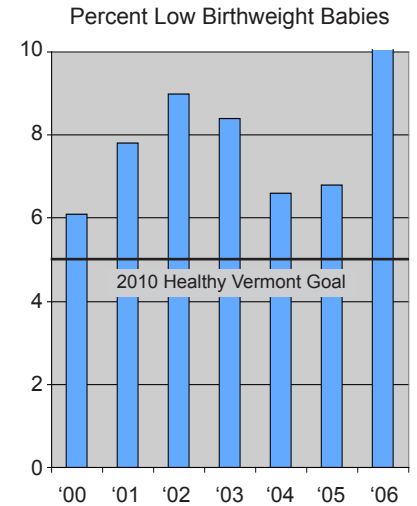
Essex County (continued)

VERMONT KIDS COUNT



Health Indicators

	2000			2006		
	County total	County rate	State rate	County total	County rate	State rate
Population <18 ¹	1,657	25.7	24.3	1,441	21.4	21.6
Early Prenatal care ²	57	82.7	87.9	39	82.4	86.0
Low Birthweight ³	4	6.1	6.1	5	10.3	6.5
Infant Mortality ⁴	0	4.7	6.2	0	0.0	5.5
Child Deaths ⁵	0	0.0	16.4	0	31.9	18.5
Teen Deaths ⁶	1	220.8	71.9	0	0.0	58.1
Young Teen Births ⁷	2	14.1	11.3	1	6.3	7.8
All Teen Births ⁷	9	41.6	23.9	3	14.9	19.8



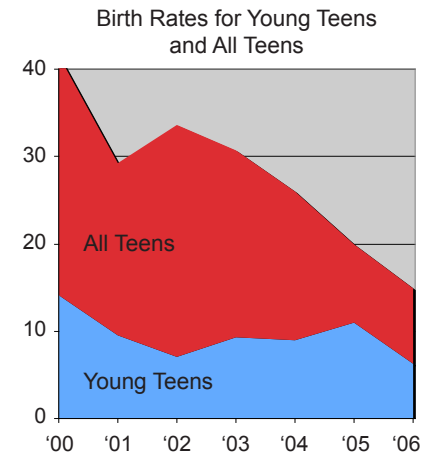
HEALTH

Between 2000 and 2007, the number of children in Essex County declined by nearly 22%. The state child population also declined, by 11%.

Babies with low birth weight—under 5.5 pounds—are at risk of respiratory conditions, cognitive and developmental delays, and long-term conditions. In Vermont and nationwide, this problem has been increasing steadily. The Healthy Vermonters 2010 objective is to reduce the percentage to 5.0%. The county's rate increased to 10.3% of all live births, up from 6.1% in 2000.

Teen birth rates were 14.9 per 1,000 teen girls aged 15-19, about 25% lower than the state average.

The percent of pregnant women receiving prenatal care within the first trimester was 82.4%, compared to the Healthy Vermonters 2010 objective of 90%.



All health rates and counts are based on three-year averages. For example, the year 2006 represents the average of 2004-2006. Rates based on small counts should be used with caution. Such rates may change significantly from one period to the next—even if the actual count only increased from 1 to 2.

- 1 Children ages 0-17 as percent of total population.
- 2 Pregnant women who seek early prenatal care (within first trimester), per 100 live births.
- 3 Infants weighing less than 5.5 pounds at birth per 100 live births.
- 4 Infant deaths less than one year of age per 1,000 live births.
- 5 Child deaths per 100,000 children ages 1-14.
- 6 Teen deaths per 100,000 youths ages 15-19.
- 7 Young Teen Births refer to mothers ages 15-17; All Teen Births refers to mothers ages 15-19. Rates are per 1,000 females of the same age.

For definitions and sources: <http://www.voicesforvtkids.org/wp-content/uploads/kidscount/sources.pdf>

Vermont KIDS COUNT research is funded by the Annie E. Casey Foundation. We thank them for their support but acknowledge that the findings presented in these county pages are those of Voices for Vermont's Children alone, and do not necessarily reflect the opinions of the Foundation.

Voices
for Vermont's Children

