

# Vermont

VERMONT KIDS COUNT

2007

total population	621,254
children under 18	131,353
median income	\$49,698
children living in poverty <sup>2</sup>	15,894
% children living in poverty <sup>2</sup>	12.4%

1 in 8  
Vermont  
children live in  
poverty.

## Economic Security

	2000		2007 <sup>1</sup>	
	State total	State rate	State total	State rate
Food Stamps	18,525	12.6	19,356	14.6
Dr. Dynasaur/Medicaid <sup>3</sup>	52,449	35.7	57,608	43.4
TANF (Reach-up) <sup>4</sup>	11,239	7.6	8,024	6.0
School Meals <sup>5</sup>	26,600	26.7	27,493	29.9
New Families at Risk <sup>6</sup>	224	8.4	161	6.2

### ECONOMIC SECURITY

About 3 in 10 public school students were approved for School Meals, an increase of nearly 12% from 2000.

More than 1 child in 7 relied on Food Stamp benefits, an increase since 2000 of 16%.

Rates of Food Stamp enrollments and students approved for School Meals have both increased since 2000—which may be related to increased child poverty as well as improved outreach.

More than 3 in 7 children were enrolled in Dr. Dynasaur/Medicaid statewide, or 57,608 in 2007. (2007 represents the average of 2005-2007.) Overall enrollment counts have been declining in recent years. The Dr. Dynasaur health insurance program includes both “traditional” Medicaid—which covers children and pregnant women who meet strict income, health, and household guidelines—and expanded public health insurance that provides coverage to children whose family incomes are up to three times the poverty level. Among the expanded insurance group, some of whom pay premiums based on income, participation has declined significantly in recent years. At same time, the number of children receiving traditional Medicaid has increased.

With the exception of poverty and median income estimates, all rates and counts are based on three-year averages. For example, the year 2007 represents the average of 2005-2007.

1 2007 data except School Meals (2008) and New Families at Risk (2006).

2 Since the estimates are not based on direct counts, county data should not be compared. Smaller population areas have wider confidence intervals and should be used with caution. For more details and cautions, see:

<http://www.census.gov/cgi-bin/saige/saige.cgi>. The 2007 Federal Poverty Threshold was \$20,650 for a family with two adults and two children.

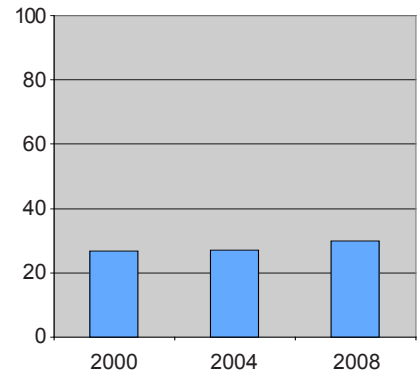
3 Dr. Dynasaur, Vermont’s public health insurance program for children and pregnant women.

4 The Reach-Up Program is Vermont’s version of TANF, the federal Temporary Aid to Needy Families Program.

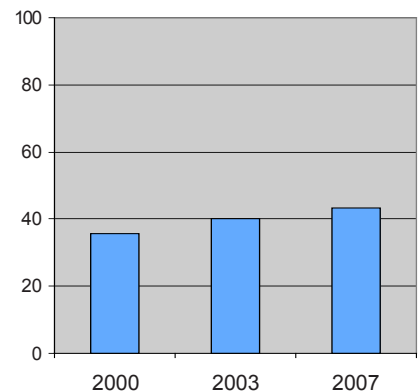
5 Public school students approved for free and reduced-price Federal School Meals.

6 Percentage of first births to unmarried women under 20 with less than 12 years of education.

Percent of Students Approved for Federal School Meals

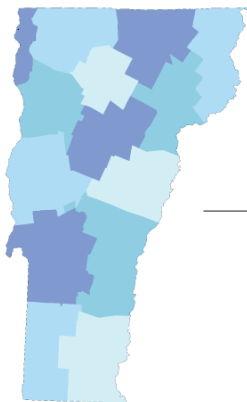


Percent of Children Enrolled in Dr. Dynasaur/Medicaid



**Voices**  
for Vermont's Children

A proud member of  
**Voices**  
FOR AMERICA'S CHILDREN



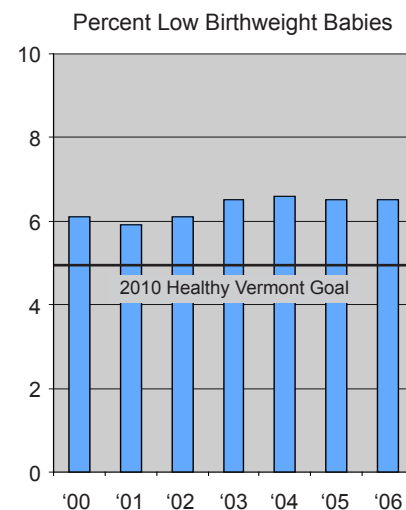
# Vermont (continued)

VERMONT KIDS COUNT



## Health Indicators

	2000		2006	
	State total	State rate	State total	State rate
Population <18 <sup>1</sup>	147,107	24.3	134,361	21.6
Early Prenatal care <sup>2</sup>	5,496	87.9	5,465	86.0
Low Birthweight <sup>3</sup>	400	6.1	423	6.5
Infant Mortality <sup>4</sup>	41	6.2	36	5.5
Child Deaths <sup>5</sup>	19	16.4	19	18.5
Teen Deaths <sup>6</sup>	33	71.9	27	58.1
Young Teen Births <sup>7</sup>	146	11.3	103	7.8
All Teen Births <sup>7</sup>	527	23.9	442	19.8



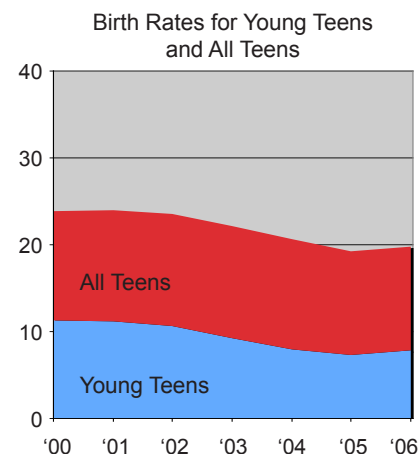
### HEALTH

Young people used to make up about one-quarter of Vermonters; they now represent slightly more than one-fifth. The child and youth population declined by 11% between 2000 and 2007.

Babies born underweight—weighing less than 5.5 pounds—are at risk of respiratory problems, cognitive and developmental delays, and long-term conditions. In Vermont and nationwide, this problem has been increasing steadily. The Healthy Vermonters 2010 objective is to reduce the percentage of low-birthweight babies to 5.0%. The Vermont average was 6.5% in 2006, up from 6.1% in 2000.

Statewide, the teen birth rate was 19.8 per 1,000 teen girls aged 15-19, 17% lower than in 2000.

The percent of pregnant women receiving early prenatal care—care within the first trimester—fell short of the Healthy Vermonters 2010 objective of 90% at 86.0%.



All health rates and counts are based on three-year averages. For example, the year 2006 represents the average of 2004-2006. Rates based on small counts should be used with caution. Such rates may change significantly from one period to the next—even if the actual count only increased from 1 to 2.

1 Children ages 0-17 as percent of total population.

2 Pregnant women who seek early prenatal care (within first trimester), per 100 live births.

3 Infants weighing less than 5.5 pounds at birth per 100 live births.

4 Infant deaths less than one year of age per 1,000 live births.

5 Child deaths per 100,000 children ages 1-14.

6 Teen deaths per 100,000 youths ages 15-19.

7 Young Teen Births refer to mothers ages 15-17; All Teen Births refers to mothers ages 15-19. Rates are per 1,000 females of the same age.

For definitions and sources: <http://www.voicesforvtrkids.org/wp-content/uploads/kidscount/sources.pdf>

Vermont KIDS COUNT research is funded by the Annie E. Casey Foundation. We thank them for their support but acknowledge that the findings presented in these county pages are those of Voices for Vermont's Children alone, and do not necessarily reflect the opinions of the Foundation.

**Voices**  
for Vermont's Children

