



Washington County

VERMONT KIDS COUNT

2007

total population	58,926
children under 18	11,990
median income	\$52,504
children living in poverty ²	1,273
% children living in poverty ²	10.8%

More than 1 in 10 children in Washington County live in poverty.

Economic Security

	2000			2007 ¹			% change in County rates, 2000 - most recent	County rate compared to state rate
	County total	County rate	State rate	County total	Current rate	State rate		
Food Stamps	1,558	11.4	12.6	1,435	11.8	14.6	3.1%	19.5% lower
Dr. Dynasaur/Medicaid ³	4,693	34.4	35.7	4,875	39.9	43.4	16.2%	8.0% lower
TANF (Reach-up) ⁴	1,000	7.3	7.6	650	5.3	6.0	-27.4%	11.3% lower
School Meals ⁵	2,365	24.1	26.7	2,351	26.1	29.9	8.4%	12.7% lower
New Families at Risk ⁶	16	5.9	8.4	14	5.8	6.2	-1.8%	6.5% lower

ECONOMIC SECURITY

At \$52,504, the median household income was slightly above the state median of \$49,698.

26.1% of public school students were approved for School Meals Programs, compared to the state average of 29.6%.

More than 1 child in 10 received Food Stamp benefits, compared to 1 in 7 statewide.

Rates of Food Stamp enrollments and students approved for School Meals have both increased since 2000—which may be related to increased child poverty as well as improved outreach.

39.9% of children were enrolled in Dr. Dynasaur/Medicaid, compared to the state average of 43.4%.

With the exception of poverty and median income estimates, all rates and counts are based on three-year averages. For example, the year 2007 represents the average of 2005-2007.

¹ 2007 data except School Meals (2008) and New Families at Risk (2006).

² Since the estimates are not based on direct counts, county data should not be compared. Smaller population areas have wider confidence intervals and should be used with caution. For more details and cautions, see:

<http://www.census.gov/cgi-bin/saige/saige.cgi>. The 2007 Federal Poverty Threshold was \$20,650 for a family with two adults and two children.

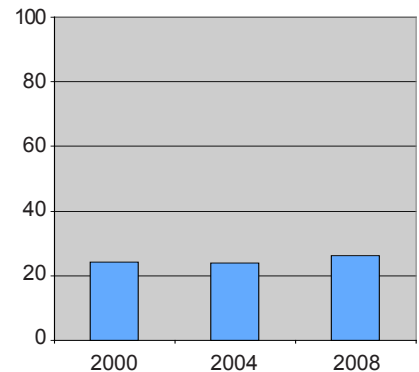
³ Dr. Dynasaur, Vermont's public health insurance program for children and pregnant women.

⁴ The Reach-Up Program is Vermont's version of TANF, the federal Temporary Aid to Needy Families Program.

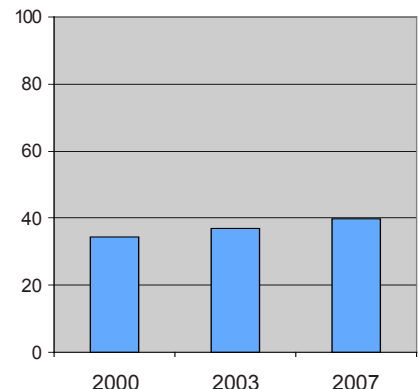
⁵ Public school students approved for free and reduced-price Federal School Meals.

⁶ Percentage of first births to unmarried women under 20 with less than 12 years of education.

Percent of Students Approved for Federal School Meals



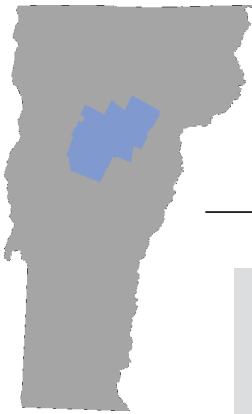
Percent of Children Enrolled in Dr. Dynasaur/Medicaid



Voices
for Vermont's Children

A proud member of
Voices
FOR AMERICA'S CHILDREN

PO Box 261 • Montpelier, Vermont 05601 • 802-229-6377 • fax 802-229-4929
vtkids@voicesforvtkids.org • www.voicesforvermontschildren.org



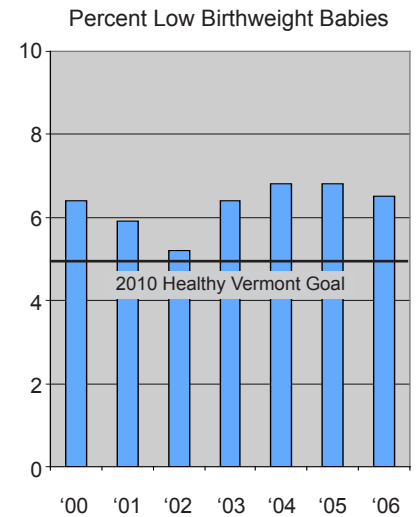
Washington County (continued)

VERMONT KIDS COUNT



Health Indicators

	2000			2006		
	County total	County rate	State rate	County total	County rate	State rate
Population <18 ¹	13,659	23.7	24.3	12,437	20.9	21.6
Early Prenatal care ²	524	88.2	87.9	509	85.7	86.0
Low Birthweight ³	39	6.4	6.1	39	6.5	6.5
Infant Mortality ⁴	6	10.5	6.2	4	6.6	5.5
Child Deaths ⁵	0	3.2	16.4	3	35.8	18.5
Teen Deaths ⁶	5	111.5	71.9	2	40.0	58.1
Young Teen Births ⁷	10	7.9	11.3	8	6.3	7.8
All Teen Births ⁷	49	25.9	23.9	41	20.8	19.8



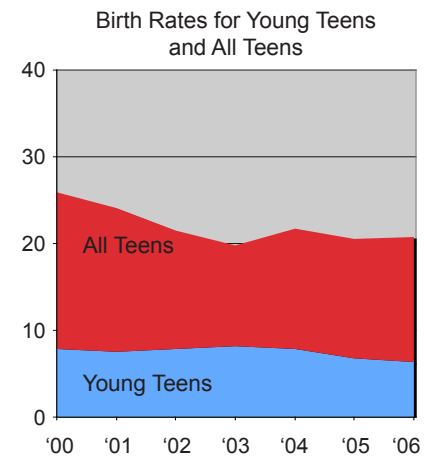
HEALTH

Between 2000 and 2007, the number of children in Washington County declined by about 12%. The state child population also declined, by 11%.

Babies with low birth weight—under 5.5 pounds—are at risk of respiratory conditions, cognitive and developmental delays, and long-term conditions. In Vermont and nationwide, this problem has been increasing steadily. The Healthy Vermonters 2010 objective is to reduce the percentage to 5.0%. The county's rate increased to 6.5% of all live births, up slightly from 6.4% in 2000.

Teen birth rates were 20.8 per 1,000 teen girls aged 15-19, which is 20% lower than in 2000.

The percent of pregnant women receiving prenatal care within the first trimester was nearly 85.7%, compared to the Healthy Vermonters 2010 objective of 90%.



All health rates and counts are based on three-year averages. For example, the year 2006 represents the average of 2004-2006. Rates based on small counts should be used with caution. Such rates may change significantly from one period to the next—even if the actual count only increased from 1 to 2.

- 1 Children ages 0-17 as percent of total population.
- 2 Pregnant women who seek early prenatal care (within first trimester), per 100 live births.
- 3 Infants weighing less than 5.5 pounds at birth per 100 live births.
- 4 Infant deaths less than one year of age per 1,000 live births.
- 5 Child deaths per 100,000 children ages 1-14.
- 6 Teen deaths per 100,000 youths ages 15-19.
- 7 Young Teen Births refer to mothers ages 15-17; All Teen Births refers to mothers ages 15-19. Rates are per 1,000 females of the same age.

For definitions and sources: <http://www.voicesforvtkids.org/wp-content/uploads/kidscount/sources.pdf>

Vermont KIDS COUNT research is funded by the Annie E. Casey Foundation. We thank them for their support but acknowledge that the findings presented in these county pages are those of Voices for Vermont's Children alone, and do not necessarily reflect the opinions of the Foundation.

